

Series 3 Technician's Installation and Service Training Manual

8830 Battery Backup Installation



Warning Electrical Shock Hazard

To prevent serious injury or death always ensure power is disconnected when wiring anything into the ZAP Controller.

Materials Required

8830 Battery Backup System (Figure A), 14-18 awg 6 conductor cable

Tools required

Drill, 6" Phillips Driver bit, Appropriate mounting fasteners

After properly mounting the 8830 Battery Backup through the corner pillar mounting holes, next to the ZAP Controller, ensure that you plug the four batteries onto the battery backup circuit board as highlighted in yellow (Figure A)

After isolating the power supply to the ZAP Controller, run a six conductor cable between the 8830 Battery Backup (Figure B) and the ZAP Controller (Figure C) using the pre-drilled case wiring outlets.

Using the two six terminal connectors provided with the 8830 Battery Backup, wire and terminate the 6 conductor cable as indicated by the following chart and highlighted colors indicated in (Figures B & C)

Controller		Battery Backup	
MOT	to	MOT V+	
24V	to	+24V	
V1+	to	+16V	
RL5	to	CNTRL 5	
RL6	to	CNTRL 6	
GND	to	COMMON	

Restore power to the controller. The "on charge" led should illuminate.

The battery backup system should remain on charge for a minimum of 24 hours before attempting its use.



Figure A

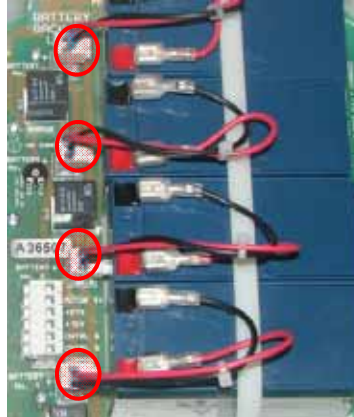


Figure B

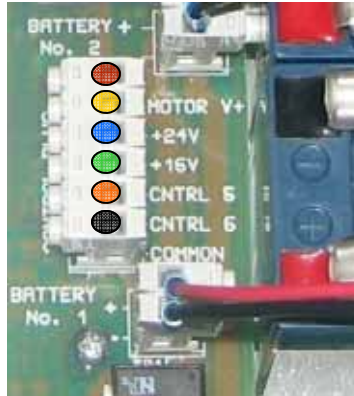


Figure C



Figure D

ZAP Series 3 Simply Logical

ZAP Controls
100 Waterloo Blvd. Anglesey Business Park, Littleworth Road, Cannock, Staffordshire, England
UK Contact 011-44-154-387-9444 sales@zap-uk.com
USA Contact 931-510-4432 sales@zap-america.com
USA Tech Support 931-510-4432 via telephone or text
Online www.zap-uk.com